



MONTHLY MEMBERSHIP PROGRESS REPORT

District 325A1

Results as of: 5/31/2017

GMT: NAZMUL HAQUE

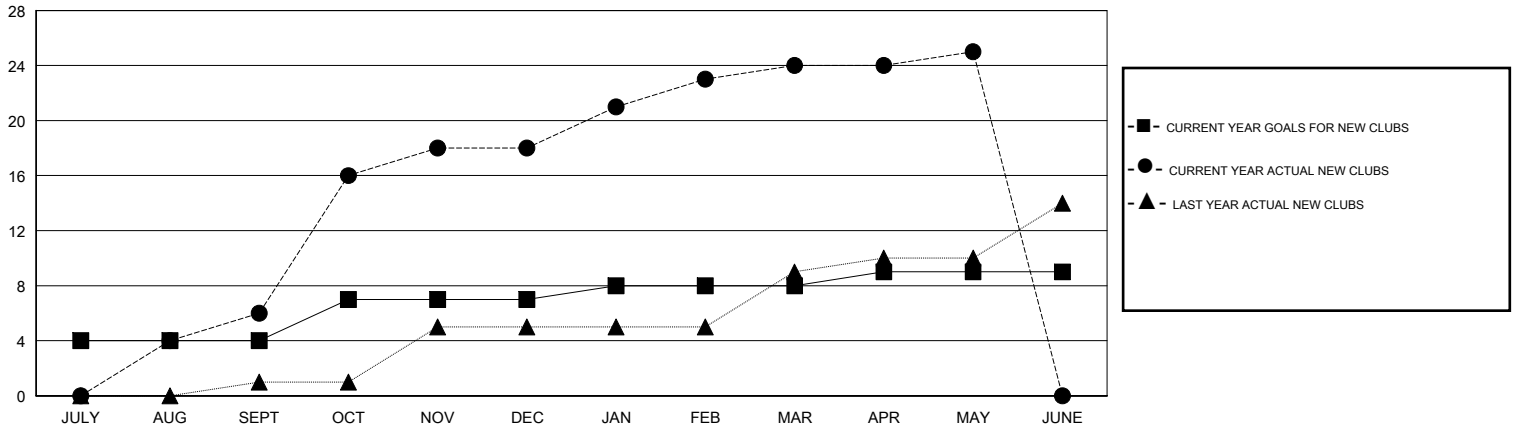
LOCATION NEPAL

GMT CA

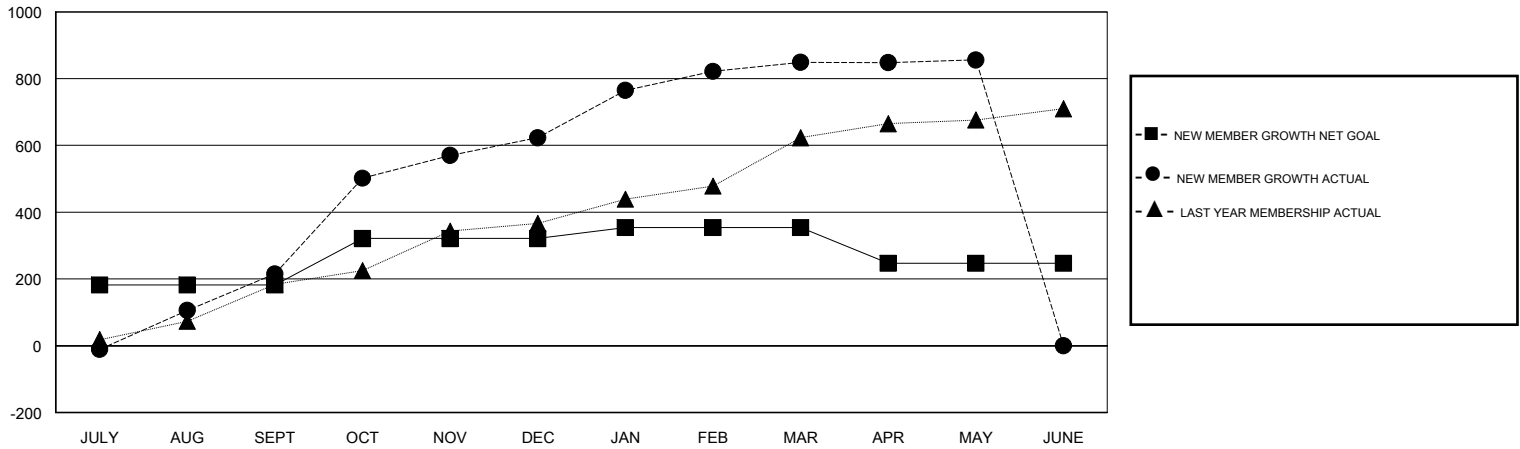
Clubs			
RESULTS FOR 2016-2017			
QUARTER	NEW CLUB GOAL	NEW CLUBS	DROPPED CLUBS
JULY/AUG/SEPT	4	6	0
OCT/NOV/DEC	3	12	0
JAN/FEB/MAR	1	6	0
APR/MAY/JUNE	1	1	0

Members			
RESULTS FOR 2016-2017			
QUARTER	NEW MEMBER GROWTH NET GOAL (not reinstated or transfers)	NEW MEMBER GROWTH ACTUAL (not reinstated or transfers)	DROPPED MEMBERS ACTUAL (including transfers)
JULY/AUG/SEPT	182	371	156
OCT/NOV/DEC	139	475	67
JAN/FEB/MAR	33	287	61
APR/MAY/JUNE	-107	56	49

GOALS AND ACTUAL NEW CLUBS CUMULATIVE



GOALS AND ACTUAL MEMBERS CUMULATIVE



DROPPED CLUBS: 0	95 CLUBS OF 130 ADDED 1 OR MORE NEW MEMBERS	<u>GENDER DISTRIBUTION</u>	
DROPPED MEMBERS		MALE	2,964 (73.95%)
DECEASED	7	FEMALE	1,044 (26.05%)
CLUB CANCELLED	0	TOTAL FAMILY UNIT MEMBERS	
OTHER	326	1,911	
TOTAL	333	FAMILY MEMBERS PAYING HALF DUES	
		1,202	

[CLICK HERE FOR CUMULATIVE MEMBERSHIP DATA](#)